

EXTRA CAP MINI LOADER L150XD L150XE

DIESEL OR ELECTRIC

1,6 t

0,9m³



EXTRA
CAPACITY



LOW
MAINTENANCE
COST



COMFORT



SAFETY

MAXIMISED PRODUCTIVITY
MINIMISED DILUTION

 **Aramine**
NEVER STOP MINING

MINILOADER L150XD

DIESEL



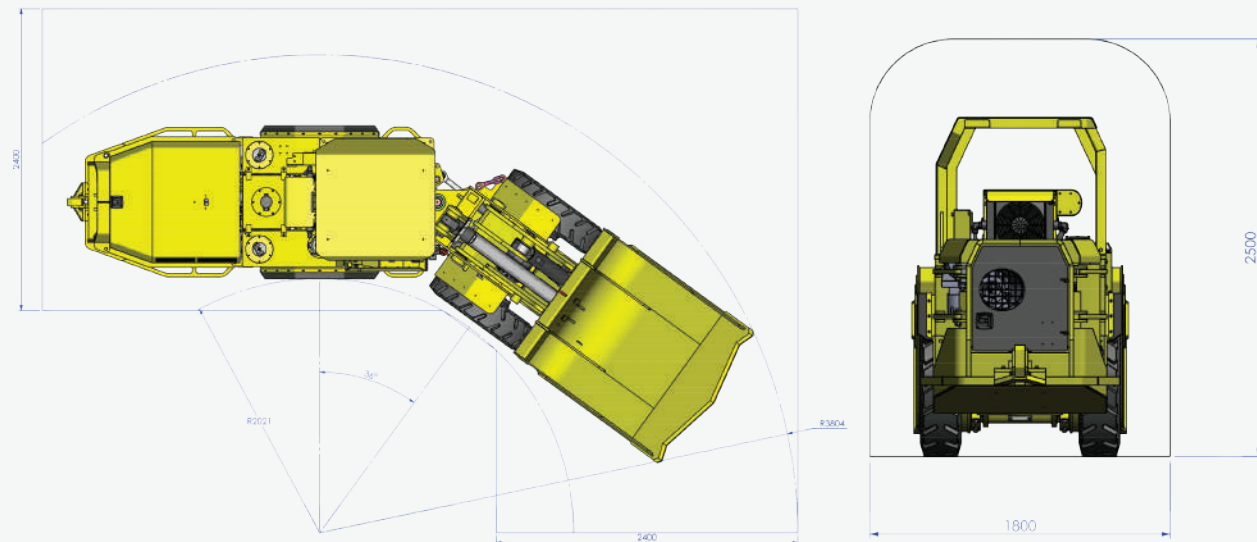
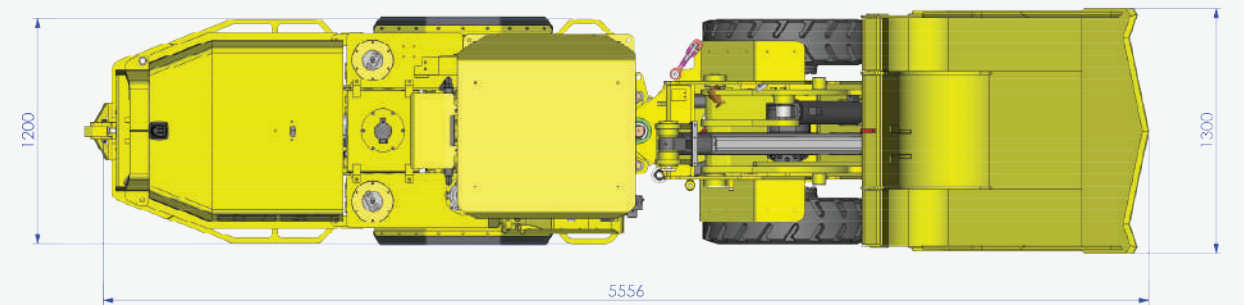
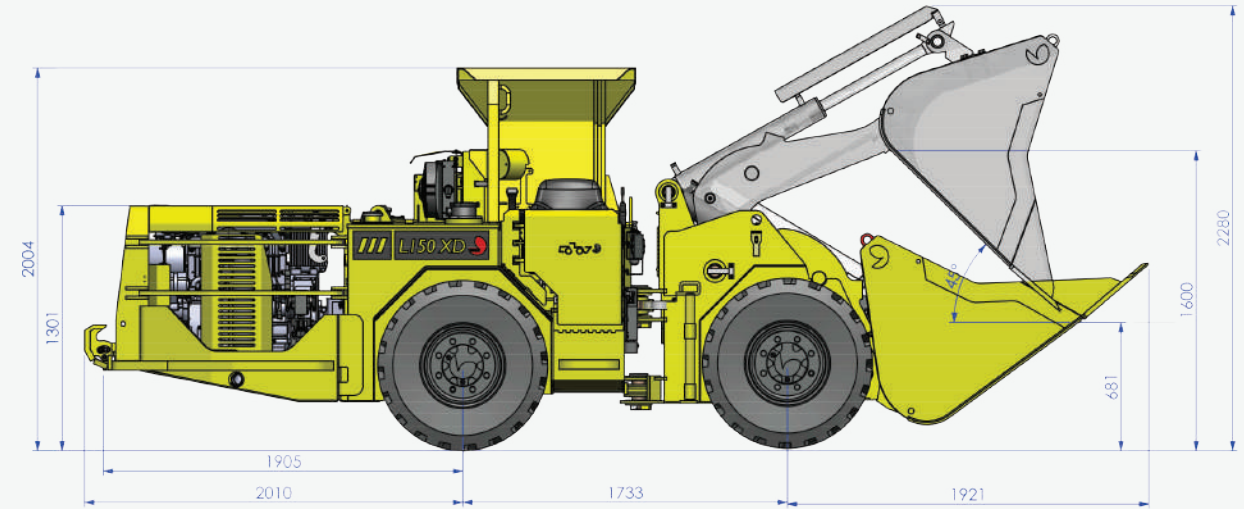
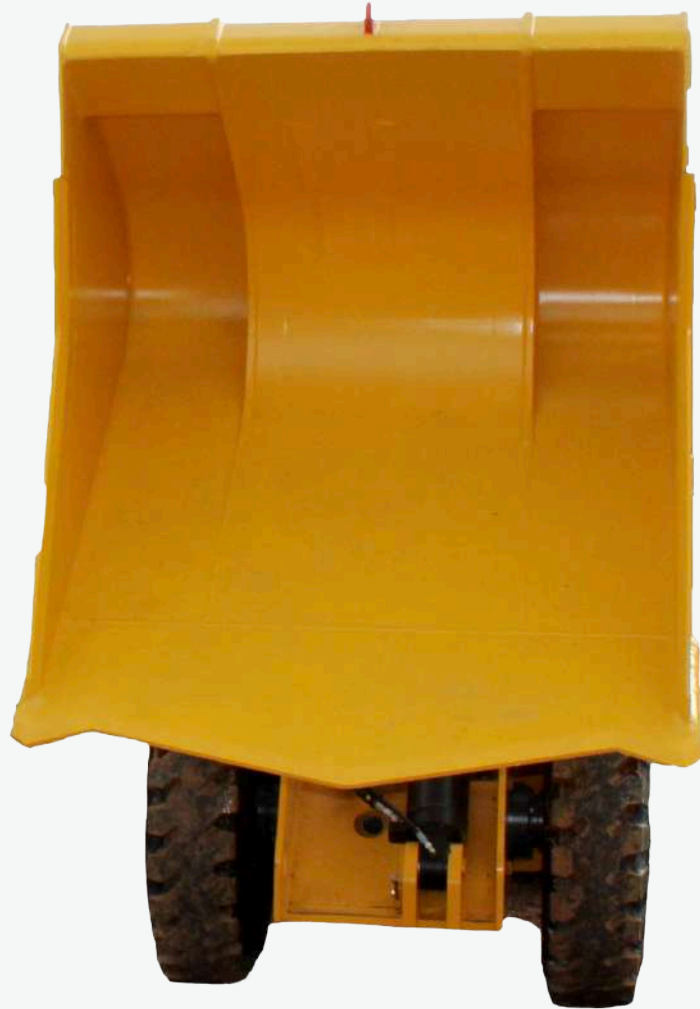
PROVEN
COMPONENTS



MODERN



MARKET STANDARD
IN ITS RANGE



EXTRA CAPACITY DIESEL LOADER

As our machines always have been, the miniloader® L150XD is designed for the highest certifications to offer comfort and reliability to our customers. This extra capacity will allow an increased productivity in narrow vein mining while maintaining low maintenance costs.

**Drawing shown with optional «Brake Release Tow Hook»*

MINILOADER L150XE

ELECTRIC

0%
CO₂

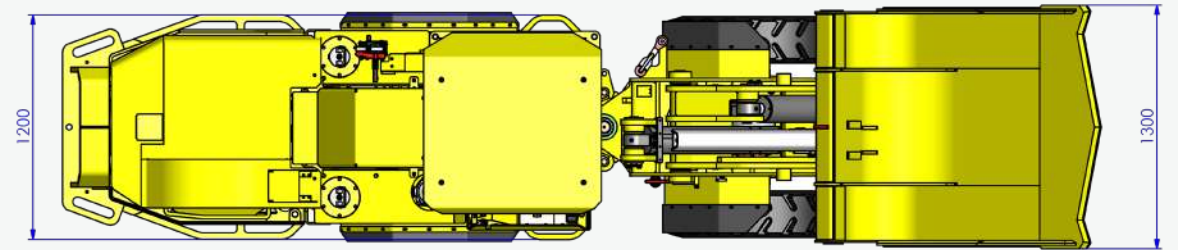
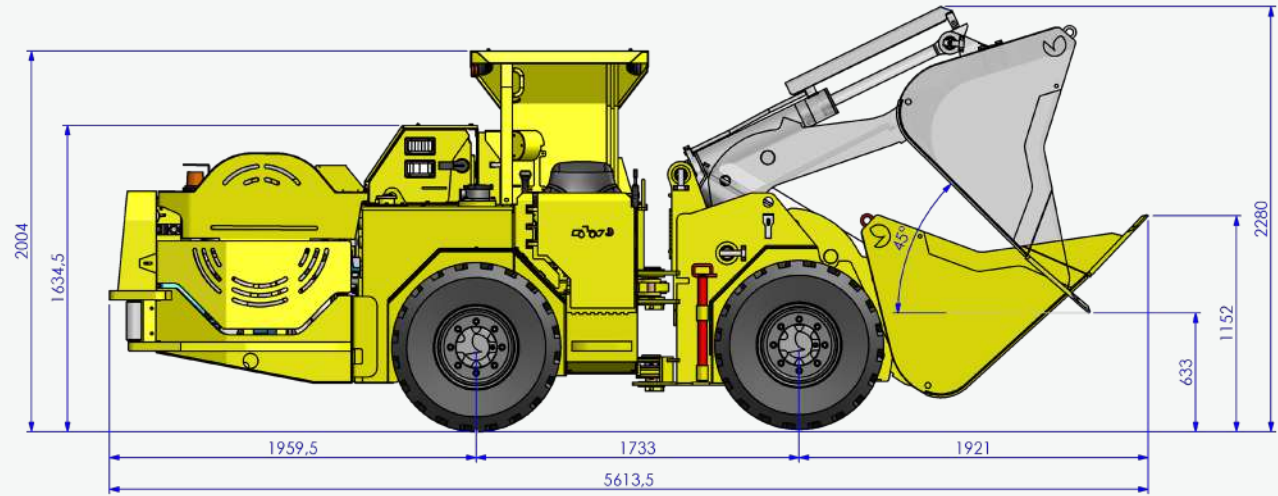
EMISSION



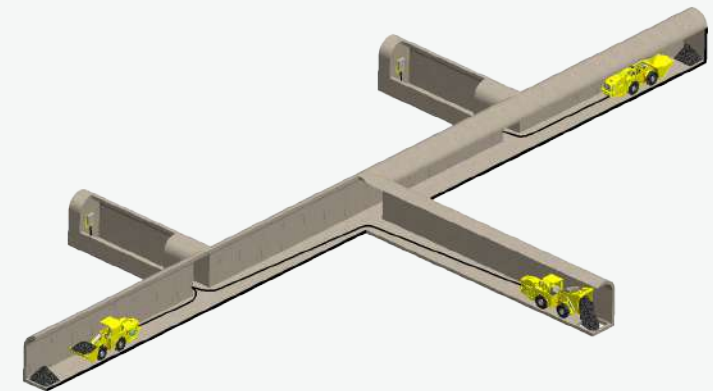
LOW NOISE



CABLE REEL



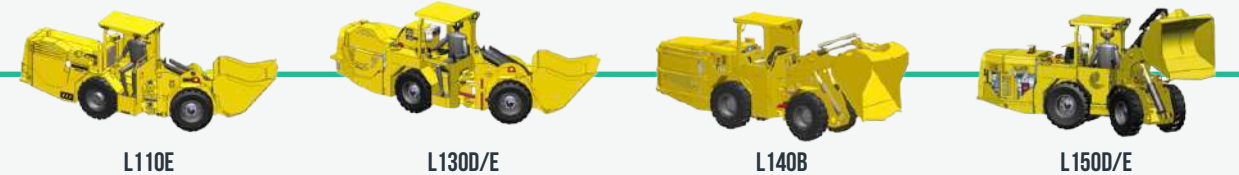
Typical use of Aramine electric loader



EXTRA CAPACITY ELECTRIC LOADER

The miniLoader® L150XE has been designed to offer a comfortable and pure environment to the driver and miners around. The electric power brings less noise and no CO₂ emission in the working environment while the extra capacity increase your productivity.

DISCOVER OUR FULL RANGE OF NARROW VEIN MINILOADER®



COMMON SPECIFICATIONS

CAPACITIES

Tramming capacity	1 600 kg		
Static tipping load	30 kN		
Breakout force, tilt (SAE)	40 kN		
Breakout force, lift (SAE)	34 kN		
Tractive effort	32 kN		
Empty weight	4 800 kg		
Empty	Front 1 400 kg / Rear 3 400 kg		
Loaded	Front 3 400 kg / Rear 2 800 kg		
Standard bucket volume	0,8 m ³		
Density (t/m ³)	1,8	2	2,3
Volume (m ³)*	1,2	1	0,9
Volume (Yd ³)*	1,6	1,3	1,2
Width (mm)	1,3	1,3	1,2

* Heaped SAE

TIRES

MICHELIN: 8,25 R15 Xmine D2
Mounted on demountable rims

TRANSMISSION

Hydrostatic Transmission fully reversible
Pump: variable displacement 90 cm³ @ 400 Bars
Motor: fixed displacement 63 cm³

OSCILLATION

Rear axle mounted on oscillation frame with 12° articulation (6 degrees in each side)

OPERATOR'S COMPARTMENT

Side seated operator, for better visibility in both directions
Seat with suspension, armrests and safety belt
Ergonomically located Steer & Bucket pilot joystick
ROPS/FOPS certified bolted Canopy with back protection
Entry door with bucket & steering interlock

BRAKES

Service: hydrostatic brake with pedal control and spring applied multi-disc assistance
Parking & Emergency: LCB multi-discs brake, spring applied hydraulic release, mounted in rear axle
Manuel and/or automatic actuation in case of energy loss (hydraulic, electric, engine) and when operator is out of seat

SPEED

Vehicle speed loaded	0 to 9 km/h
Boom speed	Raising 3,8s / Lowering 3 s
Bucket speed	Roll Back 4,4 s / Dumping 5,7 s

TANK CAPACITY

Hydraulic	80 L (welded to frame)
Hydrostatic	70 L (welded to frame)
Tank with access cover (easy cleaning)	

HYDRAULIC SYSTEM

Suction strainer	100 microns
Return & suction filter	25µ Cartridge
Fluid	Class 68

Hydraulic gear type pump 41 cc
Hydraulic pilot steering & bucket controls

Hydraulic cylinders, double acting type:
One (1) for Stab
One (1) for Hoist
Two (2) for Steering

FRONT AND REAR AXLES

Front & Rear axles, Aramine A5107 Series

Front: rigid axle with wheel end planetary and Nospin® differential lock type

Rear: oscillating mounted axle with wheel en planetary and standard differential

Dropbox mounted on rear axle

STANDARD EQUIPMENTS

Certified ROPS/FOPS Canopy over operator
Hydrostatic transmission
Pilot operated steering joystick (left)
Pilot operated steering joystick (right) with Fwd, Neut & Rev integrated buttons
Seat with armrest and safety belt
Dash Board with Default Indic Gage, Front & Rear lights and Horn switch. Engine Stop/Start keyed switch
Manual centralized lube system
BackUp Audio / Visual Alarm
Replaceable inserts to central hinge, bucket and boom articulations
Dump cylinder protection
Safety central hinge locking device
Safety boom raised locking device
Brake test system
Safety joystick interlock
Michelin 8,5R15 X-Mine D2

OPTIONS

Automatic lube system
Extinguisher
Fire suppression system (powder)
Radio remote control system
Emergency Power Steering (electro-hydraulic)
Bucket with high abrasive blades reinforcement
EOD Ejector Blade Bucket
Brake release tow hook

SPECIFIC TO L150XD

DIESEL

SPEED

Vehicle Speed loaded	0 to 8,5 km/h
Boom speed	Raising 3,8s / Lowering 3 s
Bucket speed	Roll Back 4,4 s / Dumping 5,7 s

ENGINE & ENERGY

Choice between 2 Deutz Engine
Model D914L04 - CE: I I I 3A & MSHA certified 53kW
Model BF4L914 - High Altitude 53kW @ 4000m ASL
Exhaust: Catalytic purifier and Silencer
Fuel Tank 50L (Bolted)

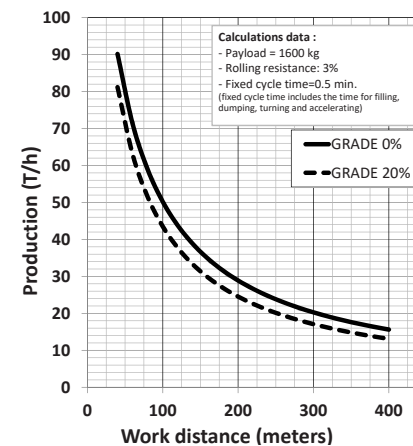
ELECTRIC SYSTEM

Sealed electrical system with replaceable harness
Batteries 12 V 105 Ah
Starter & accessories: 12V
2 Front & 2 Rear LED lights : 12V
Alternator : 12V 95A

SPEED ON GRADE

GRADE (%)	SPEED (km/h)	
	EMPTY	LOADED
0	10,8	10,7
5	10,3	10,1
10	9,9	9,4
15	9,3	8,0
20	8,5	5,9
25	6,8	4,5
30	5,5	3,6

PRODUCTION in T/h



*One way. For longer distance, contact our sales department

SPECIFIC TO L150XE

ELECTRIC

SPEED

Vehicle Speed loaded	0 to 6 km/h with 60Hz 0 to 5 km/h with 50Hz
Boom speed	Raising 4,5s-3,7s / Lowering 3,5s/2,9 s
Bucket speed	Roll Back 5,2s-4,3s / Dumping 6,8s-5,6s

ENGINE & ENERGY

Motor:
Three-phase asynchronous - Squirrel Cagel P55 Degree of protection
Power, Frequency and speed
37kW power @ 50Hz - 1500 rpm
43 kW power @ 60Hz - 1800 rpm

System :

Electrical system compatible with 380V-50Hz and 440V-60Hz

ELECTRIC SYSTEM

Sealed electrical system with replaceable harness
2 Front & 2 Rear lights: 24V - H3 - 70W
Electrical system with pilot cable

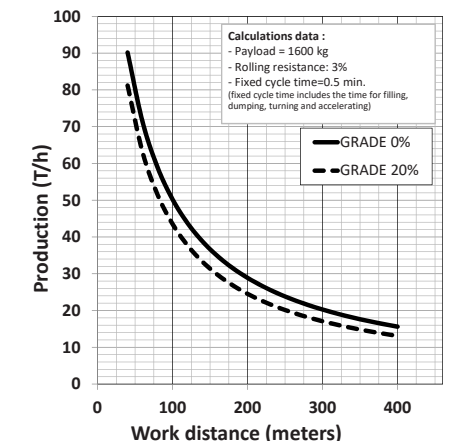
CABLE & CABLE REEL

Hydraulic driven with self tension cabl reel
Heavy duty cable guiding for underground mining application
Capacity :
80m of cable 4 x 16mm²
(800mm diam cable reel)

SPEED ON GRADE

GRADE (%)	SPEED (km/h)			
	50HZ		60HZ	
	EMPTY	LOADED	EMPTY	LOADED
0	6,6	6,6	8,0	7,9
5	6,5	6,4	7,8	7,7
10	6,3	6,2	7,7	7,5
15	6,2	6,1	7,5	7,4
20	6,1	4,5	7,4	5,6
25	5,1	3,4	6,3	4,4
30	4,1	2,7	5,2	3,5

PRODUCTION in T/h



*One way. For longer distance, contact our sales department

NEVER STOP MINING



PAAP-BP 60205
158 Rue Henri Bessemer
13796 Aix en Provence
+33(0) 04 42 53 53 00
info@aramine.com
www.aramine.com
www.shop.aramine.com

